

State of Wyoming Corner Record

(In compliance with the CORNER PERPETUATION AND FILING ACT, Wyoming Statutes, 1977, Section 36-11-101, et. seq., and the Rules and Regulations of the Board of Registration for Professional Engineers and Professional Land Surveyors)

Reverse side of this form may be used if more space is needed.

Record of original survey and citation of source of historical information (if corner is lost or obliterated). Description of corner monumentation evidence found and/or monument and accessories established to perpetuate the location of this corner. Sketch of relative location of monument, accessories, and reference points with course and distance to adjacent corner(s) (if determined in this survey). Method and rationale for reestablishment of lost or obliterated corner.

G.L.O. Notes: U.S. Deputy Surveyor, John B. Thomas, October, 1870; 80.00 Chains... Set a Granite Boulder 16 x 10 x 6 for corner common to Sec. 25-36-30-31.

Found: Nothing.

Set: At the latitudinal position of a east-west fence line that is supported by found existing original monuments as being an old fence line memorializing the original sectionlines, and the longitudinal position of the centerline of Laramie County Road No. 142, surveyed May 29, 1928 (See Laramie County Engineers office survey records, Book 23, Page 58). I set a No. 5 x 24" rebar with marked 2" aluminum cap, 0.4' below graded gravel surface of Laramie County Road No. 142.

See back of this sheet for ties to adjacent monuments.

Aluminum Cap Markings
T.15N.
R S 25 | S 30 R
64 S 36 | S 31 63
W 1994 W
PLS 2927

From the corner point @ 36.05' west I set a p.k nail in the south face of a power pole and at 35.44' east I set a p.k nail in the south face of a fence corner post.

200700

LARAMIE COUNTY CLERK
CHEYENNE, WY.

.97 APR 7 PM 4 39

Date of Field Work: 2, March, 1994 Office Reference: EXXON Looseleaf, Pg. 56

CROSS INDEX DIAGRAM

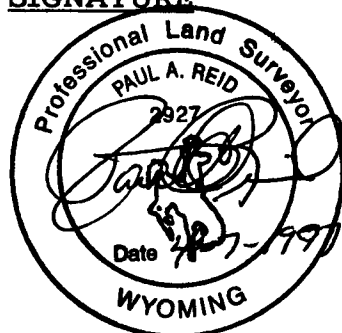
Grid diagram with columns 1-25 and rows A-Z. Numbers 1-36 are placed in the grid cells.

Firm/Agency, Address

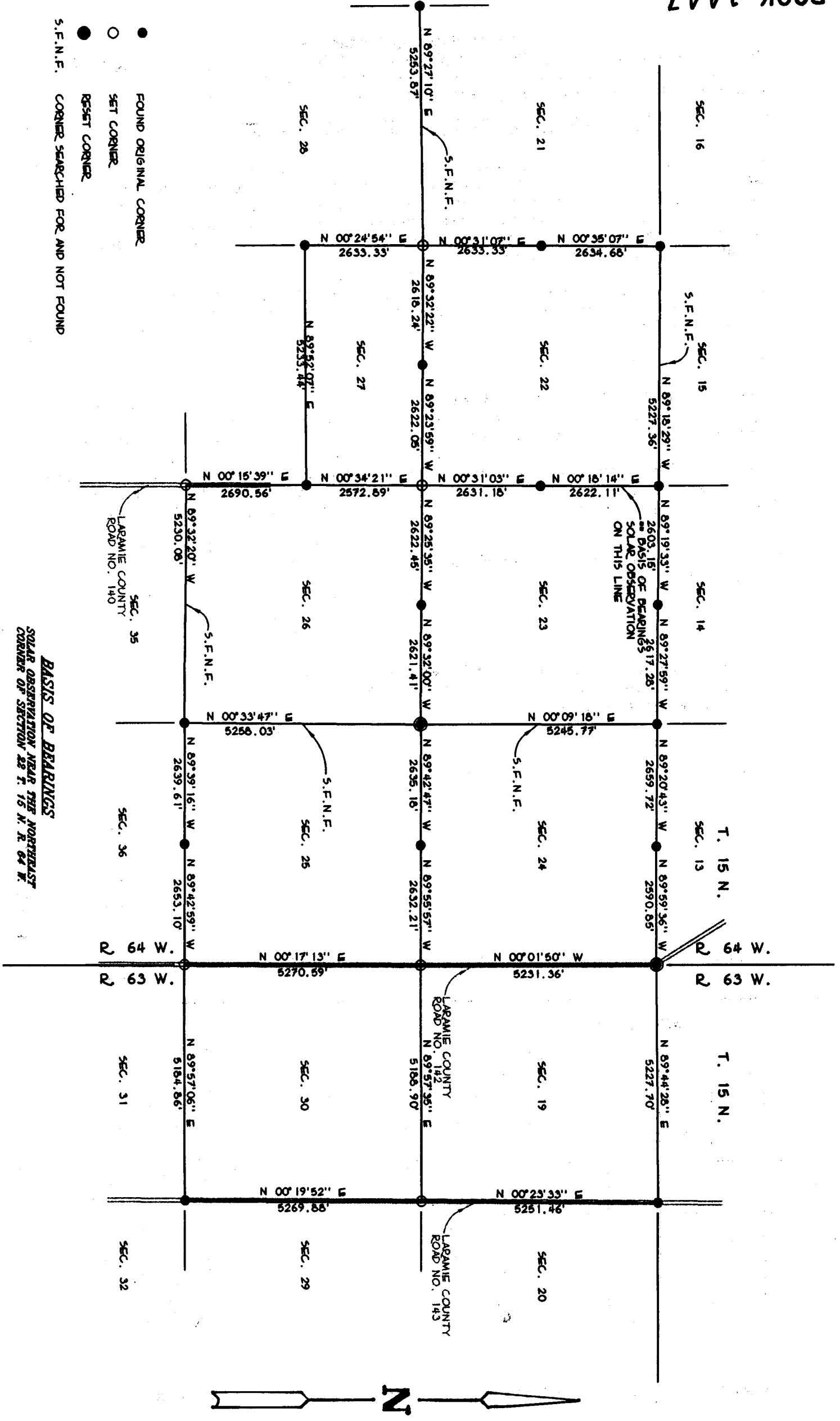
Paul A. Reid, A.V.I.p.c.
2035 Westland Road
Cheyenne, WY 82001

Telephone Number:
(307)-634-6017

This corner record was prepared by me or under my direction and supervision. SEAL & SIGNATURE



Corner Name: NE Cor. Section: 36 T 15N R 64W; 6TH P.M. Cross-Index No.: V-25



- FOUND ORIGINAL CORNER
- SET CORNER
- RESET CORNER
- S.F.N.F. CORNER SEARCHED FOR AND NOT FOUND

BASIS OF BEARINGS
 SOLAR OBSERVATION NEAR THE NORTHEAST CORNER OF SECTION 22 T. 15 N. R. 64 W.